



Green energy for a better life



BolySolar CSP P2-110



Voltage: 16.5V



Equivalent efficiency: 24~27%



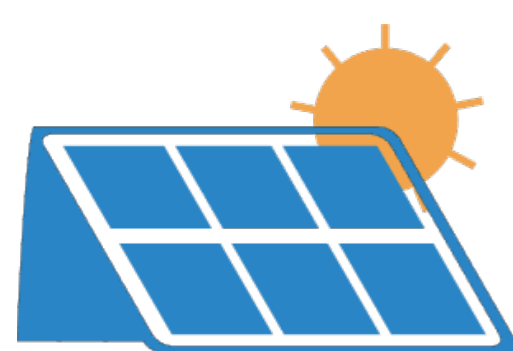
Power: >100W



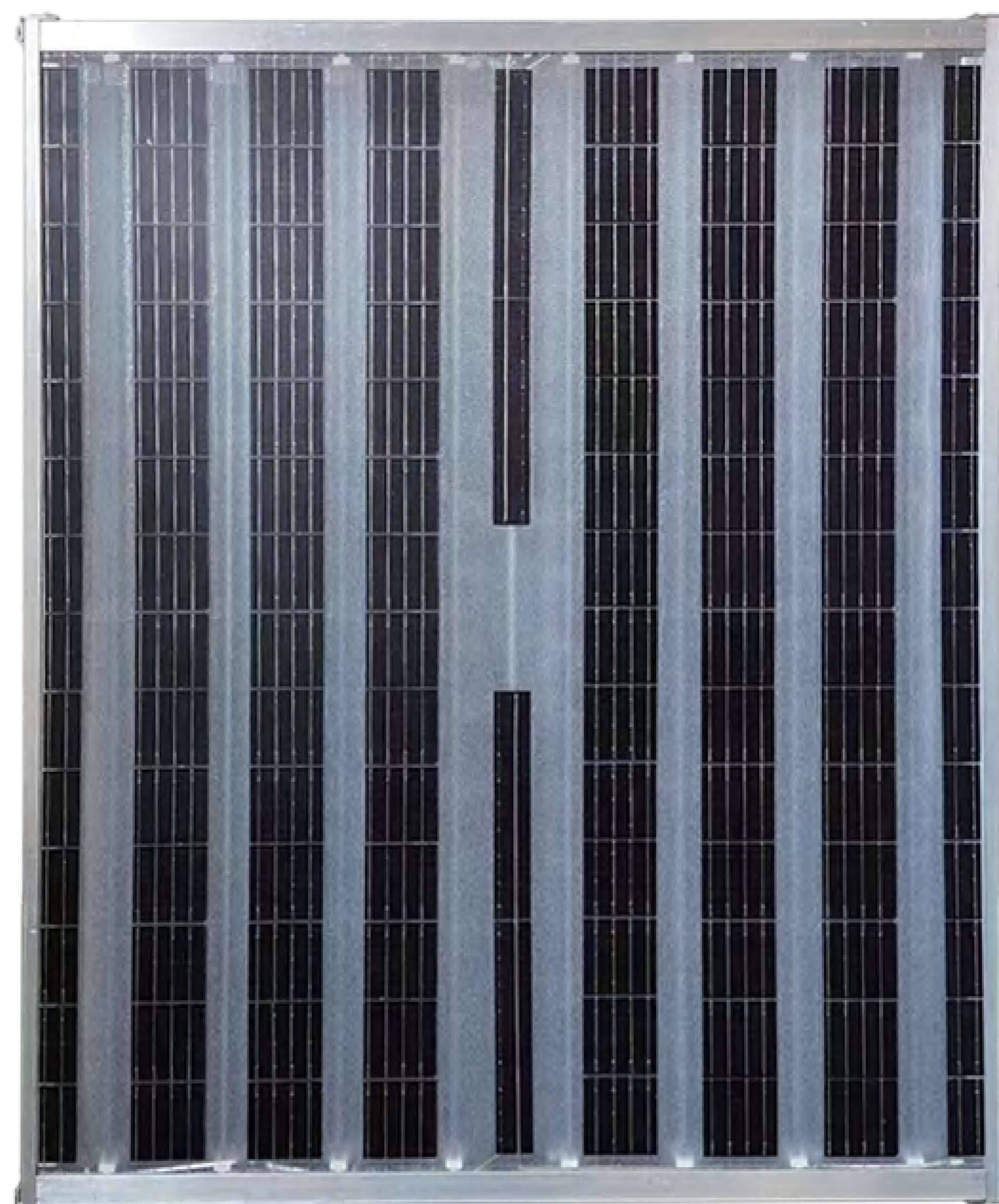
There is a gas outlet



Weight: 5.45kg



External dimensions:
715mm × 608mm × 40mm



ELECTRICAL PARAMETER(STC)

	Unit	Value
Maximum Power	Pmaks(Wp)	>100W
Positive Output Tolerance	Watt	0 ~ +0.5W
Max. Power Voltage	Vmpp (V)	18.1V
Max. Power Current	Impp (A)	4.68A
Open Circuit Voltage	Voc (V)	21.56V
Short Circuit Current	Isc (A)	5.52A
Module Efficiency	$\eta_m(\%)$	24~27%

STC : 1000W/m² Irradiation / 25°C Cell Temperature / AM=1.5 /
Measurement Accuracy $\pm 3\%$ / 1m/s Wind Speed

flow chart

